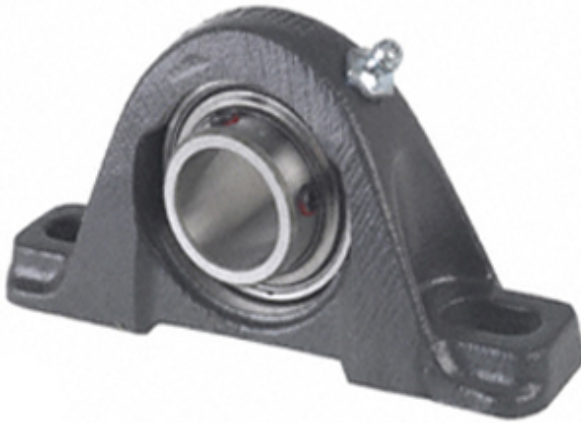




Hebei Xiantong Bearing Co., Ltd.



YAK 5/8 Bearing 2D drawings and 3D CAD models

0.625 Inch | 15.875 Millimeter x 1.078 Inch |
27.381 Millimeter x 1.063 Inch | 27 Millimeter
TIMKEN YAK 5/8 Pillow Block Bearings

Bearing No. YAK 5/8

Category	Pillow Block Bearings
Inventory	0.0
Manufacturer Name	TIMKEN
Minimum Buy Quantity	N/A
Weight	0.48
EAN	0087796157446
Product Group	M06110
Number of Mounting Holes	2
Mounting Method	Set Screw
Housing Style	2 Bolt Pillow Block
Rolling Element	Ball Bearing
Housing Material	Cast Iron
Expansion / Non-expansion	Non-expansion
Mounting Bolts	3/8 Inch
Relubricatable	Yes
Insert Part Number	GY1010KRRB
Seals	Double Land Riding Rubber Contact
Housing Configuration	1 Piece Solid
Inch - Metric	Inch
Other Features	Single Row Spherical Normal Duty Low Base
Long Description	2 Bolt Pillow Block; 5/8" Bore; 1-1/16" Base to Center Height; Set Screw Mount; Ball Bearing; 2-3/4"



Hebei Xiantong Bearing Co., Ltd.

	Minimum Bolt Spacing; 4-1/2" Bolt Spacing Maximum; Relubricatable; Cast Iron; D
Category	Pillow Block
UNSPSC	31171511
Harmonized Tariff Code	8483.20.40.40
Noun	Bearing
Keyword String	Pillow Block
Manufacturer URL	http://www.timken.com
Manufacturer Item Number	YAK 5/8
Weight / LBS	1.05
Actual Bolt Center to Center	0 Inch 0Millimeter
Nominal Bolt Center to Center	3.6 Inch 92 Millimeter
d	0.625 Inch 15.875 Millimeter
Bolt Spacing Maximum	4.5 Inch 114.3Millimeter
B	1.063 Inch 27 Millimeter
Bolt Spacing Minimum	2.75 Inch 69.85Millimeter
D	1.078 Inch 27.381 Millimeter
Shaft Size d	5/8 in
Bearing Type	Ball Bearing
Inside Ring Outside Diameter	0.941 in
Dimension T	0.594 in
Dimension D1	0.902 in
Series	Industrial
Weight	1.0 lb
Seal Type	Shroud Seal
Base to Center Height H	26.99 mm
Total Length L	123.8 mm
Total Width A	1.189 in



Hebei Xiantong Bearing Co., Ltd.

Bolt Hole Spacing J	92.1 mm
Bolt Hole Width N	11.1 mm
Bolt Hole Length N1	22.2 mm
Foot Height H1	8.7 mm
Total Height H2	53.2 mm
Dimension L1	41.3 mm
Inside Ring Width B	=Bearings1_Inside Ring Width= mm
Center of Bearing from End S	11.5 mm
Dimension B1	1.079 in
Static Load Rating	1070 lbf
Dynamic Load Rating	2380 lbf